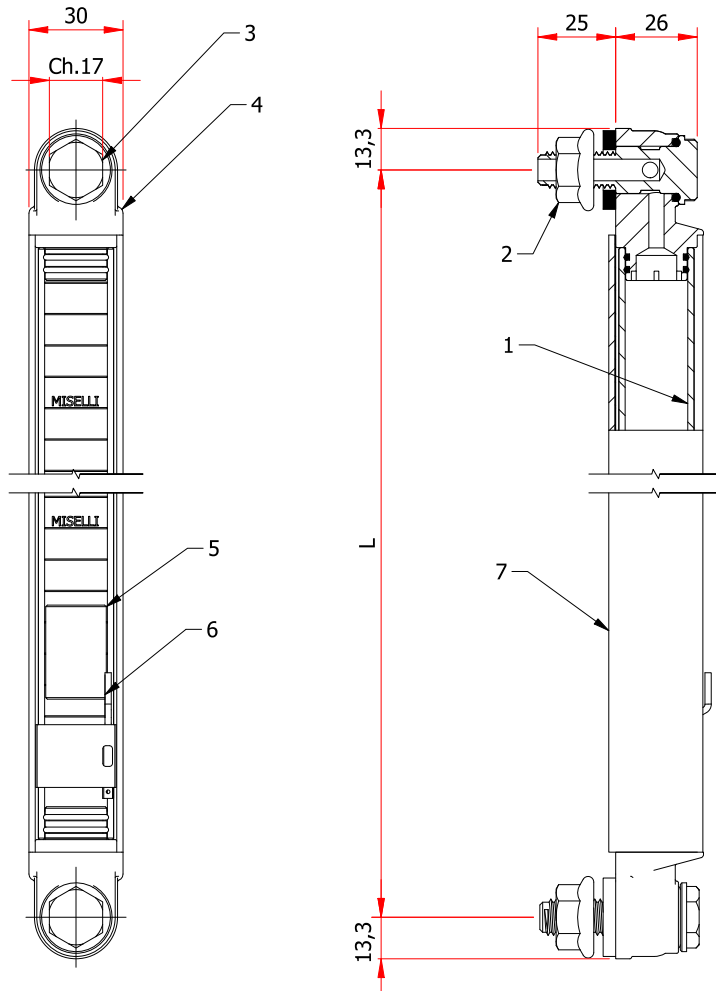
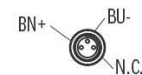
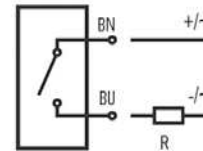


XLV-SL

VERTICAL LEVEL GAUGE - VARIABLE LENGTH - WITH MINIMUM LEVEL ELECTRICAL SWITCH

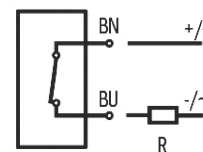


NO sensor



BN (+) = brown
 BU (-) = blue
 N.C = not connected

NC sensor



BN (+) = brown
 BU (-) = blue

-**REED switch** attached on the external guard, adjustable in height according to the level design requirement; minimum location position is 2" or 50 mm from the center of the lower bolt. Standard switch is supplied with power cable 30 cm in length with M8 male connector. On request it is possible to provide a separate connection cable (250 cm in length) complete with female M8 connector. Possibility to apply more of level sensors positioned at different heights.

-**Floating element** made in technopolymer containing a magnet that, when in proximity with the REED sensor, closes the electrical contact.

-**Standard execution: normally open** electrical contact (NO). On request, it is possible to provide electrical contact **normally closed** (NC).

-**Operation features:** the vertical level gauge XLV/SL, in addition to allowing a visual inspection, provides an electrical signal when the float element reaches the preset minimum level.

COMPONENTS LIST

| Item | Description |
|------|--------------------------------------|
| 1 | Polycarbonate transparent tube |
| 2 | Flanged hex M12 |
| 3 | Hollow bolt M12 |
| 4 | Plastic end caps |
| 5 | Magnetic floating element |
| 6 | "REED" sensor with M8 male connector |
| 7 | Aluminum U-shape guard |

ELECTRICAL CHARACTERISTICS "REED" SWITCH

| | |
|---------------------------|------------------|
| Sensor type | "REED" 2 wires |
| Supply voltage | 3÷30 Vac/dc |
| Electrical contact | NO Normally open |
| Switching current | 0,2A |
| Power rating (Ohmic load) | 6 W |
| Working temperature | -10°C/+70°C |
| Protection degree | IP67 |