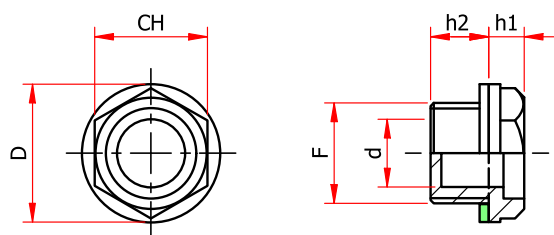


SLC - OIL LEVEL SIGHT GLASS



Threaded oil level indicator, hex head with shoulder, utilized in oil tanks, gearboxes, hydraulic machinery and tools. The base of the threaded end is solid therefore residual fluid which could give false indication is not trapped inside when level dropped down.

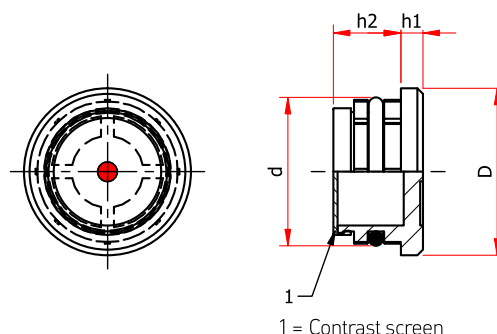
-Material: transparent polyamide which provides good mechanical resistance to shocks, hydraulic fluids, synthetic and mineral oils, diesel, some unleaded fuel; avoid contact with alcohol based solutions and antifreeze liquids, especially at high temperatures

-Maximum working temperature: 90°C/194°F.

-Sealing: flat fiber gasket.

Cod.	CH	F	D	d	h1	h2	Nm	Weight gr	Pack.
SLC/38	18	G 3/8"	22	12	7	10	6	2	100
SLC/12	24	G 1/2"	29	16	5	10	10	4	100

SLP - PRESS-FIT LEVEL SIGHT GLASS



Press-fit oil level indicator with mounting on plain holes, referred to the diameter F (drilling diameter) with wall thickness \geq than 5 mm, with tolerance $\pm 0,1$, chamfer 1/45°. Do not use in pressurized tanks.

and mineral oils, diesel, some unleaded fuel; avoid contact with alcohol based solutions and antifreeze liquids, especially at high temperatures.

-Sealing: O-ring NBR 70 Shore.

-Maximum working temperature: 90°C/194°F.

-Material: transparent polyamide which provides good mechanical resistance to shocks, hydraulic fluids, synthetic

Cod.	F=Ø mm	D	Ø d	h1	h2	Weight gr	Pack.
SLP/17	17	18	16,9	3	7	4	100
SLP/20	20	24	19,6	4	10	4	100
SLP/26	26	30	25	4	11,5	5	100
SLP/32	32	36	31,7	4	13	8	100
SLP/38	38	42	37,5	4	14	10	100
SLP/40	40	44	39,5	4	14	12	50