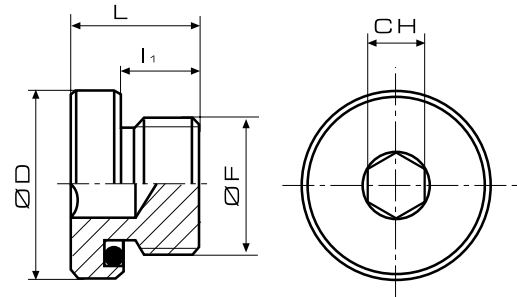


## TTCE - CYLINDRICAL STEEL PLUG WITH INTERNAL HEX AND NBR SEAL



- **Material:** Steel 11SMnPb37
- **Sealing:** NBR 90 Shore.
- **Max. working temperature:** 100°C/212°F

| Cod.                    | ØF       | I1   | L  | ØD | CH | Pack. |
|-------------------------|----------|------|----|----|----|-------|
| TTCE-18                 | G 1/8"   | 9    | 13 | 15 | 4  | 100   |
| TTCE-14                 | G 1/4"   | 11   | 16 | 19 | 6  | 100   |
| TTCE-38                 | G 3/8"   | 11   | 17 | 22 | 6  | 100   |
| TTCE-12                 | G 1/2"   | 14   | 20 | 27 | 8  | 50    |
| TTCE-34                 | G 3/4"   | 14   | 20 | 32 | 12 | 50    |
| TTCE-1                  | G 1"     | 16   | 22 | 40 | 12 | 25    |
| TTCE-114 (on enquiry)   | G 1 1/4" | 18   | 25 | 50 | 12 | -     |
| TTCE-112 (on enquiry)   | G 1 1/2" | 17   | 24 | 55 | 24 | -     |
| TTCE-10.1               | M 10x1   | 8    | 12 | 15 | 5  | 100   |
| TTCE-12.15              | M 12x1.5 | 10   | 16 | 17 | 6  | 100   |
| TTCE-14.15              | M 14x1.5 | 10   | 16 | 19 | 6  | 100   |
| TTCE-16.15              | M 16x1.5 | 10   | 16 | 22 | 6  | 100   |
| TTCE-18.15              | M 18x1.5 | 11   | 17 | 25 | 6  | 100   |
| TTCE-20.15              | M 20x1.5 | 12   | 18 | 27 | 8  | 50    |
| TTCE-22.15              | M 22x1.5 | 12   | 18 | 28 | 8  | 50    |
| TTCE-26.15 (on enquiry) | M 26x1.5 | 13.5 | 20 | 32 | 12 | -     |
| TTCE-27.2 (on enquiry)  | M 27x2   | 13.5 | 20 | 32 | 12 | -     |
| TTCE-33.2 (on enquiry)  | M 33x2   | 15   | 21 | 40 | 17 | -     |
| TTCE-42.2 (on enquiry)  | M 42x2   | 17   | 24 | 50 | 22 | -     |
| TTCE-48.2 (on enquiry)  | M 48x2   | 17   | 24 | 55 | 24 | -     |