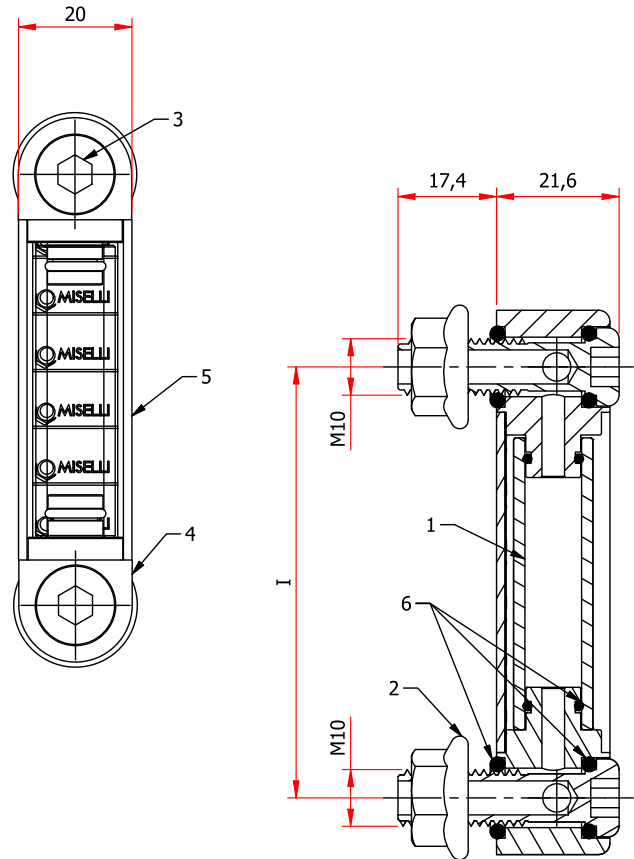


## XLP - CUSTOMIZABLE LEVEL GAUGE FOR SMALL OVERALL DIMENSION



1 = Transparent tube  
 2 = Flanged hex nut  
 3 = Screw with socket hexagon

4 = Assembling end cap  
 5 = Aluminum U-shape external case  
 6 = O-Rings

Vertical level gauge, available with customized lengths, designed for use on small tanks. Excellent visibility thanks to transparent assembling end caps. Suggested for center-to-center distance lower than 254 mm.

- **Material:** transparent polycarbonate tube, compatible with mineral and synthetic oils, hydraulic fluids, fluids containing glycole; limited resistance to unleaded fuel and diesel. Behind the tube is placed a graduated contrast screen to allow an accurate view of the level.

- **Bolts and flanged nuts:** zinc plated steel, M10.

- **Sealing:** O-ring NBR 70 Shore.

- **External case:** Aluminum U-shape.

- **Assembling end caps:** transparent polyamide.

- **Assembling instructions:** the mounting of the level gauge can be made externally by providing 2 threaded holes M10 on the center distance, tolerance  $\pm 0.2$ . Alternatively they can be secured internally through 2 plain holes 10,5 mm ( $\pm 0.2$ ). Max tightening torque suggested 3 Nm.

### Special versions

**XLP/HT** With glass tube and FKM type VITON® sealing O-ring suggested for applications involving aggressive liquids or temperatures exceeding 100°C, for short period.