

XLM – VERTICAL LEVEL GAUGE WITH ALUMINIUM CASING



Vertical level gauge designed for visual inspection of liquid level use on tanks and power packs. With sufficient quantities, available customization center-to-center distances.

Material: borosilicate glass cylindrical tube, compatible for use with mineral oils, fuels, water, or other fluids containing alcohol or glycol.

Bolts and flanged nuts: zinc plated steel.

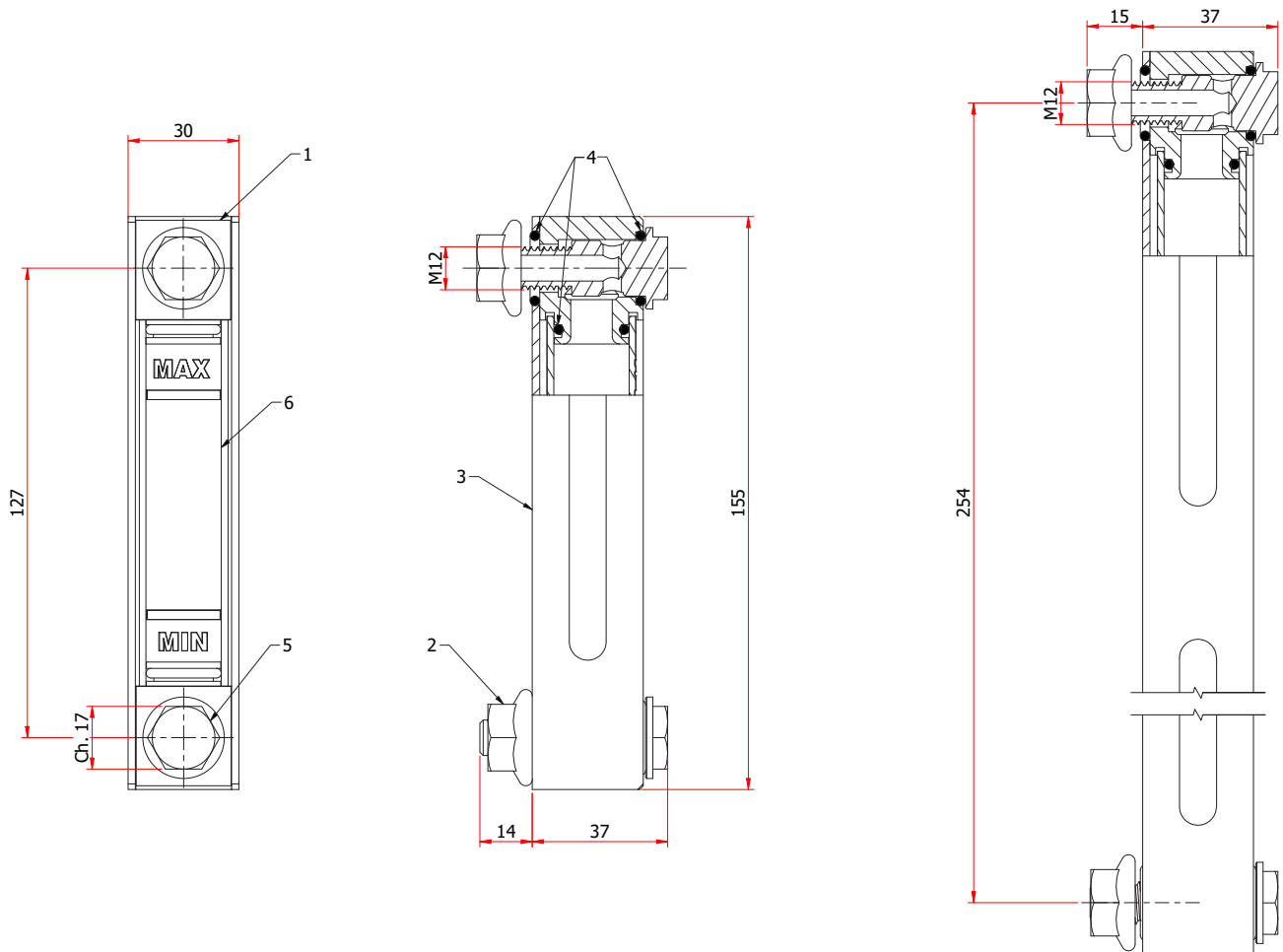
Sealing: O-Rings Fkm type Viton®.

External case: anodized aluminium.

Assembling end caps: anodized aluminum.

Maximum working temperature: 120°C/248 F, tested at an internal pressure of 25 bar/362 PSI (test made on to the 127 mm model).

Assembling instructions: the mounting of the level gauge can be made externally by providing two threaded holes M12 on the center distance, tolerance $\pm 0,1$ mm. Alternatively they can be secured internally with the flanged nut supplied by drilling two holes without chamfer and without burrs $\varnothing 12.5$ mm. Maximum recommended tightening torque 10 Nm.



Special versions

XLM-PC Manufactured with a polycarbonate tube and an NBR 70 Shore O-ring (temp. max 90°C/194 °F - max pressure 2 Bar/29 PSI).

XLM-VL with external casing with side openings to allow visibility from both sides.

XLM-RB with floating red ball to improve the visibility of the fluid level of light colored liquids (max working temperature 90°C/194°F).

XLM-TS with external probe graduated 0-120°C (30-250°F).

XLM-INOX provided with stainless steel nuts and bolts suitable for applications in corrosive environments such as marine .

XLM-UNC with bolts and nuts with thread 1/2-13 UNC.