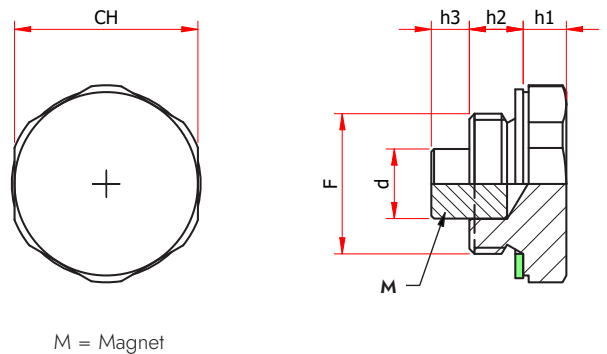
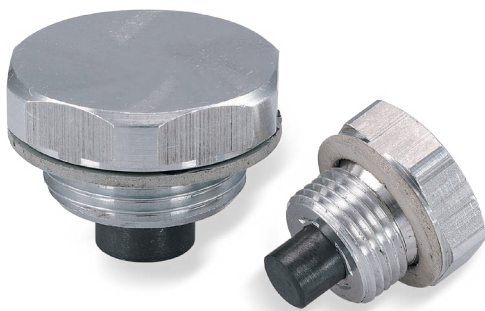


## TMA - ALUMINIUM DRAIN PLUG WITH MAGNET



M = Magnet

Aluminium hex plug with a pressed-in cylindrical magnet, located in the base of the plug. This plug is fitted to the bottom of the tank, in order to collect ferrous particles that are floating in the oil, helping to protect pumps, valves and cylinders.

**Material:** Aluminum alloy.

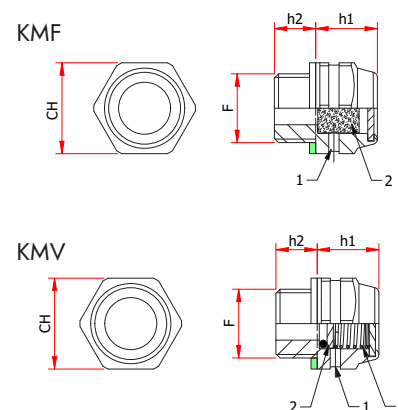
**Sealing:** flat fiber gasket.

**Magnet:** anisotropic ferrite.

Cod.	Ch	F	d	h1	h2	h3	Weight gr	Pack.
TMA/14	19	G 1/4"	5	7	10	6	10	100
TMA/38	22	G 3/8"	8	7	10	7	15	100
TMA/12	27	G 1/2"	10	8	10	7	27	100
TMA/34	34	G 3/4"	13	8	10	7	42	50
TMA/1	40	G 1"	13	8	14	7	68	50

## KMF - BRASS FILLER PLUG WITH FILTER

## KMV - BRASS FILLER PLUG WITH VENT VALVE



- 1 = Breather holes
- 2 = Air filter
- 3 = One-way check valve

Brass filler breather with two breather holes located under the hex head, providing an adequate airflow capacity. Extensively used in small oil tanks, gearboxes, gear reducers, torque multipliers and transmissions.

**Material:** Brass.

**Sealing:** flat fiber gasket.

**Maximum working temperature:** 90°C/194°F.

**KMF:** metal filter (filtration degree around 200 microns) to avoid pollution of the oil.

**KMV:** pre-tensioned spring of the valve will allow the valve disc to be lifted from its seat at a pressure of 0.35 bar/5 PSI, thus allowing the air to escape; when the pressure is reduced after venting, the valve will close and stop air to entering the tank. The vent valve, in closed position, prevent dust particles or other forms of contamination from the atmosphere to enter the oil.

Cod.	F	Ch	h1	h2	Pack.
KMF/14 KMV/14	G 1/4"	18	15,5	9	100
KMF/38 KMV/38	G 3/8"	22	14,5	10	100
KMF/12 KMV/12	G 1/2"	27	14,5	10	50